

# FRAMELESS SHOWER PRODUCTS



Quality Products from

*Andscot*

the People you can Trust!

[www.andscot.com](http://www.andscot.com)



***Frameless  
Shower Door  
Catalog  
2016***

# FRAMELESS SHOWER HINGES



All shower hinges are made of solid brass with all moving parts (pins and springs) in stainless steel. A removable protective insert covers the interior rounded (“mouse ear”) portion of the hinge. This helps keep the glass from slipping off the hinge and protects it from metal contact, extending the life of both the hinge and the glass. Hinges are made to accommodate 3/8” to 1/2” (10 to 12 millimeter) glass, are self centering, and contain a 0° return with reversible 5° pin.

## Paladia Series Hinges

Available in brushed nickel, polished bright chrome, and oil rubbed bronze. Each hinge includes gaskets, cutting template and fasteners.



Part#	Description
C50-0001	Beveled Edge Wall Mount H-Back Plate Hinge
C50-0018	Beveled Edge Pivot Floor / Ceiling Mount Hinge
B42-7469	Header Mount Adapter for Pivot Hinge



### Part Numbers: C50-0001 and C50-0018

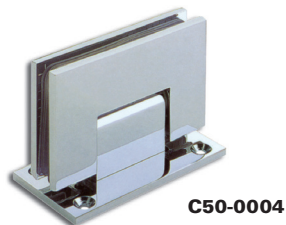
Maximum Capacities	3/8" (10mm) Glass		1/2" (12mm) Glass	
	Weight	Door Width	Weight	Door Width
Using Two Hinges	80lbs/36kg	28"/711mm	80lbs/36kg	28"/711mm
Using Three Hinges	120lbs/54kg	32"/813mm	120lbs/54kg	32"/813mm

## Roma Series Hinges

Available in brushed nickel, polished bright chrome, and oil rubbed bronze. Each hinge includes gaskets, cutting template and fasteners.



Part#	Description	
C50-0004	Square Edge Wall Mount Full Back Plate Hinge	
C50-0011	Large Square Edge Wall Mount Full Back Plate Hinge	
C50-0012*	Large Square Edge Wall Mount Short Back Plate Hinge*	*Special Order Only



### Part Numbers: C50-0004

Maximum Capacities	3/8" (10mm) Glass		1/2" (12mm) Glass	
	Weight	Door Width	Weight	Door Width
Using Two Hinges	80lbs/36kg	28"/711mm	80lbs/36kg	28"/711mm
Using Three Hinges	120lbs/54kg	32"/813mm	120lbs/54kg	32"/813mm

### Part Numbers: C50-0011 and C50-0012

Maximum Capacities	3/8" (10mm) Glass		1/2" (12mm) Glass	
	Weight	Door Width	Weight	Door Width
Using Two Hinges	110lbs/50kg	36"/914mm	110lbs/50kg	36"/914mm
Using Three Hinges	140lbs/63kg	36"/914mm	140lbs/63kg	36"/914mm

# FRAMELESS SHOWER GLASS CLAMPS AND DOOR PULLS



## Glass Clamps

Shower glass clamps are made of solid brass and can accept 3/8" to 1/2" (10 to 12 millimeter) glass. Used for securing fixed panels in a shower enclosure application, they may be attached to curb, ceiling or wall. Clear silicone can be added to provide a clean, water tight appearance.

### Traditional Glass Clamps

Available in brushed nickel, polished bright chrome and oil rubbed bronze. Hole diameter required: 5/8" (16mm).

Part#	Description
C50-0031	Traditional Style Fixed Panel Clamp



1 3/4" x 1 3/4"  
C50-0031

### Heavy Duty Hole-In-Glass Style Clamps

Available in brushed nickel, polished bright chrome and oil rubbed bronze. Hole diameter required: 3/4" (19mm).

Part#	Description
C50-0033	Square Edge - Hole in Glass Wall Mount Clamp
C50-0034	Beveled Edge - Hole in Glass Wall Mount Clamp



2" x 2"  
C50-0033



2" x 2"  
C50-0034

Each clamp includes neoprene gaskets and fasteners

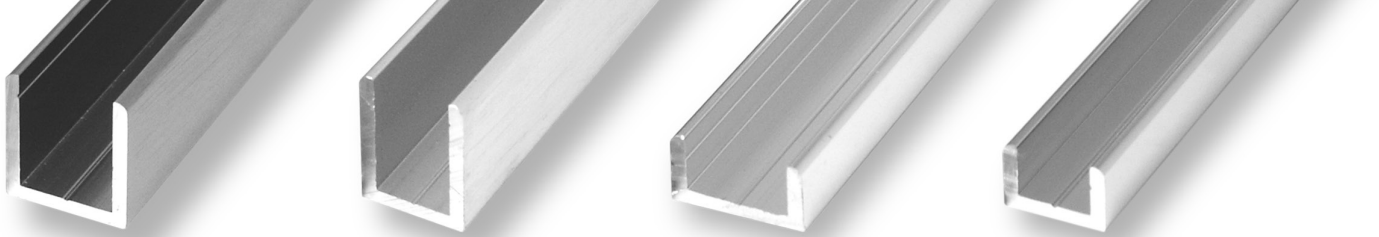
## Back-to-Back Shower Door Pulls

All shower pulls are constructed of 3/4" (19mm) stainless steel tubing and are available in finishes matching our frameless shower hinge collection. Includes plastic interior washers to protect glass against metal contact. Available in brushed nickel, polished bright chrome, and oil rubbed bronze.

Part#	Description
C60-0006	6" Back-to-Back Shower Door Pull (with removable washer)
C60-0008	8" Back-to-Back Shower Door Pull (with removable washer)

Each handle includes an Allen wrench



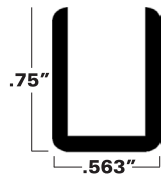


# FRAMELESS SHOWER U-CHANNELS AND HEADERS

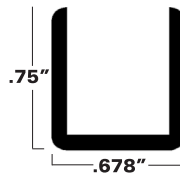


## Shower U-Channels

Available in polished bright chrome, brushed nickel and oil rubbed bronze finishes in 98" lengths. 50 pieces per case, individually plastic sleeved for protection. Some finishes are available in 12' lengths, please call to check availability.



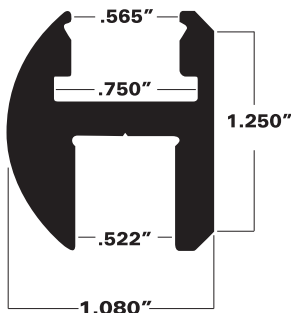
**ACI-48**  
For 3/8" Glass



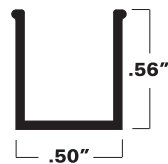
**ACI-52**  
For 1/2" Glass

## Shower Headers, Snap in Filler, Flexible Vinyl Insert & Brass Mounts

Both header and snap in filler insert are available in polished bright chrome, brushed nickel, and oil rubbed bronze. Header is available in 98" lengths . Snap in filler insert is stocked in 6' lengths.



**ACI-42**  
Header



**ACI-40**  
Snap In Filler



**Clear Vinyl for 3/8" Glass\***  
Available in Full Kit Only



**B42-9796**  
Brass Wall Mount Anchor Set

**Also available as a complete kit**



# TRANQUILITY GLIDING SHOWER DOOR SYSTEM

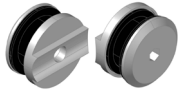


## Shower Door System Kits NEW



Full packaged kits available for 3/8" glass. Hardware in kits will work with 3/8" and 1/2" glass, but vinyl for 1/2" glass sold separately. Stocked in polished bright chrome, brushed nickel and oil rubbed bronze finishes. Polished bright chrome and brushed nickel kits sold with a 6.56ft (2 meter) tube, while oil rubbed bronze kits sold with 2pc of 3.28ft (1 meter) tube and a tube connector.

### Shower Door Kit: C70-1100 (Contains items listed below)



Tube to Fixed Glass Connector  
2 x C70-2100



Roller  
4 x C70-2120



Roller Stopper  
2 x C70-2160



Stainless Steel Tube  
0.098" Thick  
1 x C70-2140\*



Tube to Wall Connector  
2 x C70-2101



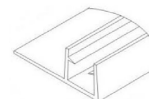
Floor Guide  
1 x C70-2162



Vinyl Sweep  
for 3/8" Glass  
1 x V70-0050



Bulb Seal  
for 3/8" Glass  
1 x V70-0060



Panel Seal  
for 3/8" Glass  
1 x V70-0070

\*ORB kit includes 2 x SS tube @ 39-3/8" with connector

## Optional Components NEW

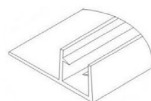
Stocked in polished bright chrome, brushed nickel and oil rubbed bronze finishes.



Vinyl Sweep  
for 1/2" Glass  
V70-0051



Bulb Seal  
for 1/2" Glass  
V70-0061



Panel Seal  
for 1/2" Glass  
V70-0071



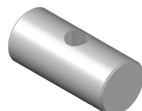
Round Handle  
C70-2161



Tube Connector  
C70-2102



Tube to 90°  
Glass Connector  
C70-2103



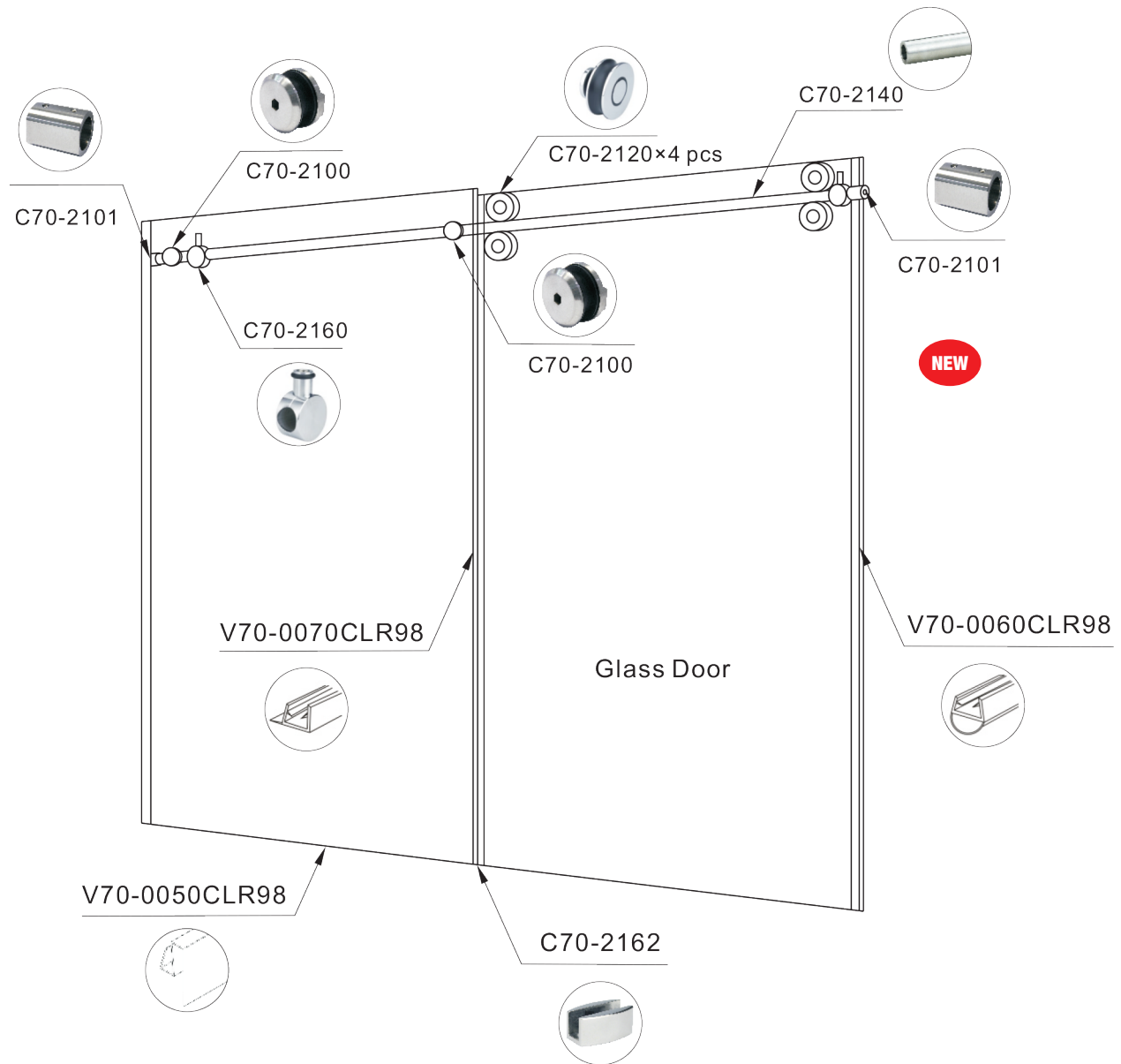
Internal Tube to  
Glass Connector  
C70-2163



# TRANQUILITY GLIDING SHOWER DOOR SYSTEM



A contemporary and elegant take on a semi frameless shower kit. Built with quality, specially designed to never warp or wear down, this system comes with pre-fabricated threaded holes for easy installation. Kits offered for 3/8" glass thickness with all hardware mounting through glass (no clamping or gluing components), with optional 1/2" glass components sold separately. Available with one of the thickest stainless steel tube walls in the industry, the longer bar is suitable for customizing all various size shower openings.



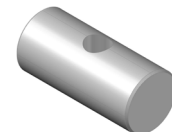
C70-2102  
Optional



C70-2161  
Optional



C70-2103  
Optional



C70-2163  
Optional

# CASCADE SHOWER DOOR SYSTEM



A stylish and easy to install semi frameless all-inclusive shower enclosure system. Offered with bypass style doors or a pivot style door, these systems are a superior mix of quality verses price. Available in clear (1/4") tempered safety glass with all hardware mounted through glass (no clamped or glued components). This simple to install system is available for standard size tubs and showers.

Available Late Summer 2016

## Slider Door Design

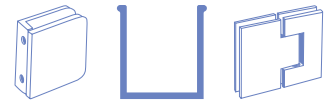
NEW

True bypass doors are left or right plumbing compatible with a dual profile reversible header (Euro Style / Traditional). Euro Style Towel Bar included in every kit. Available for 60" standard sized tubs or 48" to 60" showers. Tub height 60" and shower height 71". Stocked in polished bright chrome and brushed nickel finishes.



**Tub Widths: 60"**  
**Shower Widths: 48", 54" and 60"**

# CASCADE SHOWER DOOR SYSTEM



Available in 1/4" clear tempered safety glass with all hardware mounted through glass (no clamped or glued components).

Available late Summer 2016

## Pivot Door Design

NEW

Pivot door available in 1/4" clear tempered safety glass with all hardware mounted through glass (no clamped or glued components). Side panel is 3/16" tempered safety glass. .



### Adjustable Shower Widths:

27-30", 30-33", 33-36", 36-39", 39-42", 42-45" and 45-48"

(Reference first dimension as part of the Part Number)